

New Retail Development in Tribeca Destined to Become Architectural Landmark

- * 10,000 sq. ft. Glass Building
- * Divisions possible
- * 16 ft.+ Ceilings
- * Over 120 ft. of Glass Frontage



Neighboring Tenants Include: **Issey Miyake**, **Nobu**, **Design Within Reach**, **Baker Furniture**, **TD Bank**, **Sovereign Bank**, **Citi Bank**, **Tribeca Grand Hotel**, **Starbucks**, **Robert De Niro's new hotel The Greenwich**, **Bobby's Restaurant**, and **Odeon**

Dave Kevelson x 27

The Manhattes Group LLC 54 Thompson Street 2nd Floor New York, NY 10012

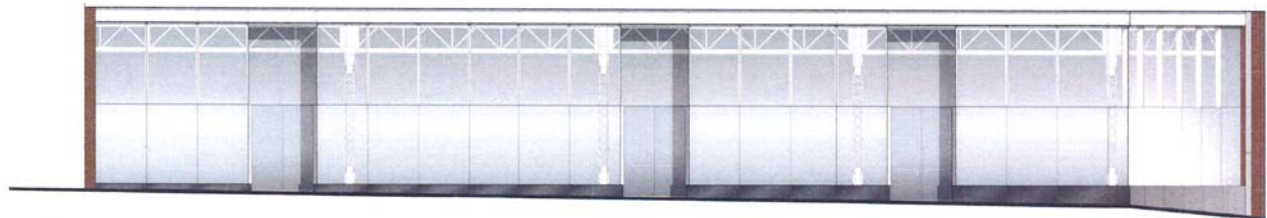
212-334-4666

WWW.Manhattes.com

Rendering of Corner Space



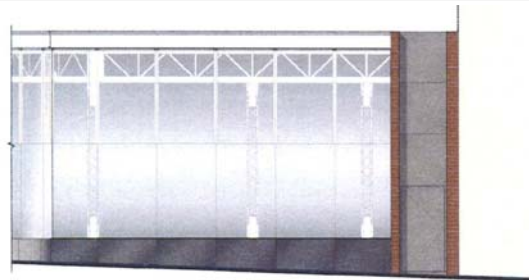
West and South Elevations



WEST ELEVATION



SECTION



SOUTH ELEVATION

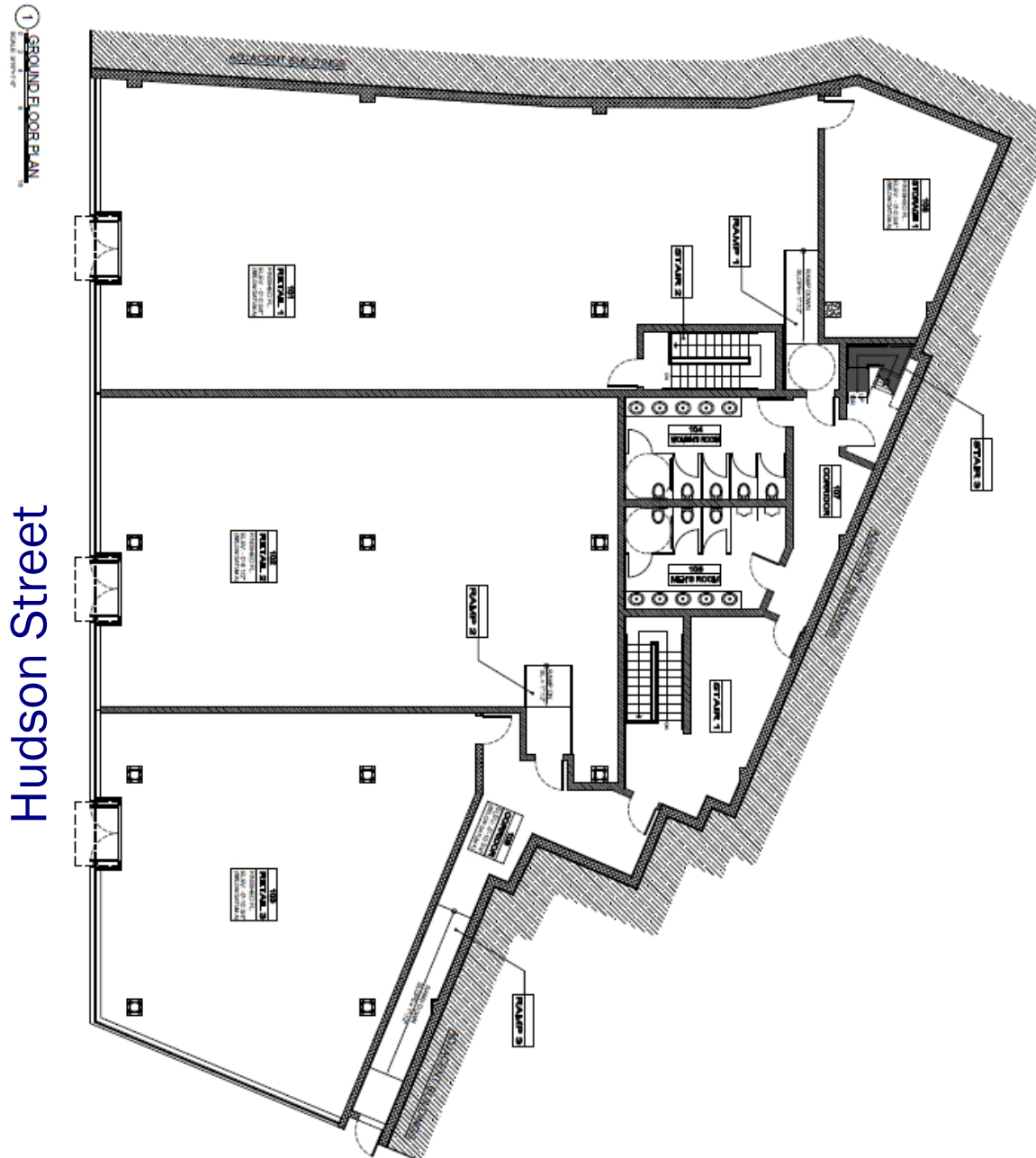
Dave Kevelson x 27

The Manhattes Group LLC 54 Thompson Street 2nd Floor New York, NY 10012

212-334-4666

WWW.Manhattes.com

Floor Plan Showing Possible Divisions



Hudson Street

Dave Kevelson x 27

The Manhattes Group LLC 54 Thompson Street 2nd Floor New York, NY 10012

212-334-4666

WWW.Manhattes.com