

Rare SoHo Loft Space For Lease Corner of Broadway and Spring Street



Space:	Entire 4th Floor
Size:	5,000 sf
Rent:	\$47.50 sf
Term:	Negotiable

Building:

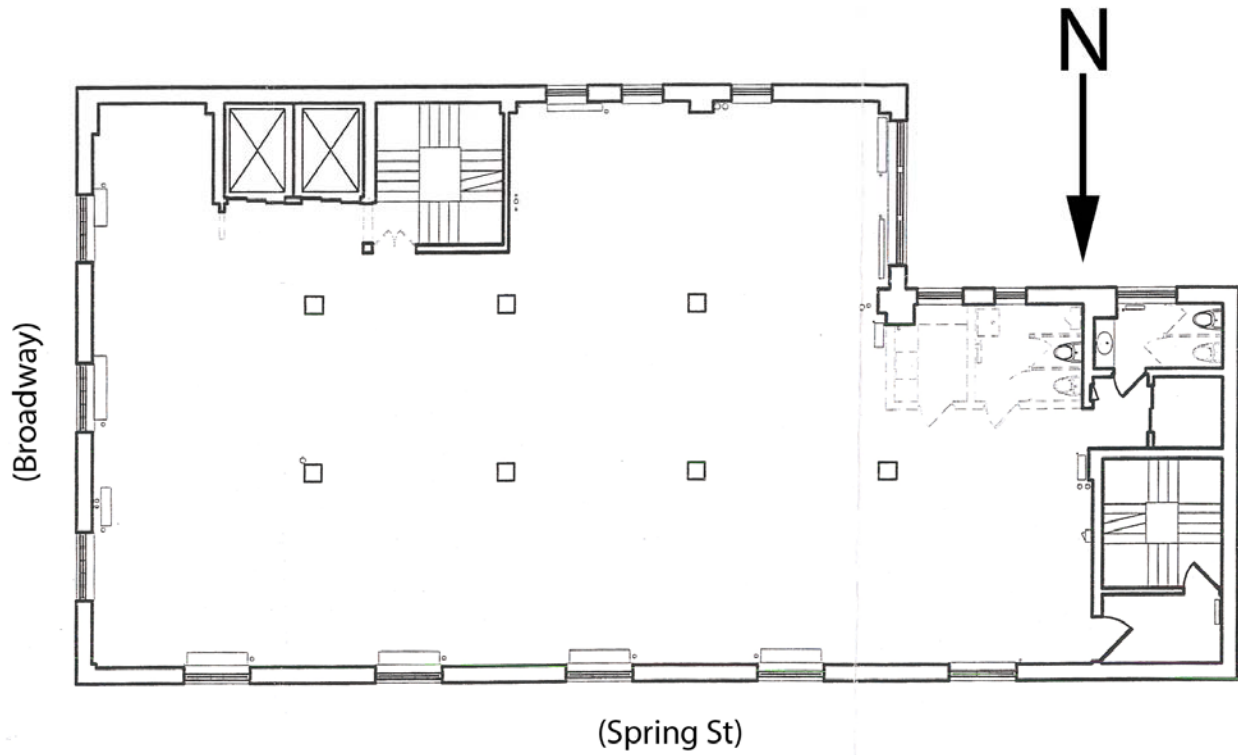
Eleven foot ceilings, columns 20 feet on center, north, east and west exposures. Co-tenants include architecture firms, media firms, technology firms, talent management firms. Ground floor leased by JP Morgan Chase Bank.

Neighboring Tenants:

Bloomingdales, Banana Republic, Burberry, Guess, Dean & DeLuca, Starbucks, Balthazar Restaurant, Club Monaco, Wachovia, Guggenheim Museum, Prada, Moma, Puma and Scoop NYC.

Drew Braver x13 Alan Shmaruk x11
The Manhattes Group LLC 525 Broadway 6th Floor New York, NY 10012
212-334-4666

Floor Plan of 4th Floor



Drew Braver x13 Alan Shmaruk x11
The Manhattes Group LLC 525 Broadway 6th Floor New York, NY 10012
212-334-4666

525 Broadway

