

RETAIL GALLERY SPACE

4,000 Square Feet

48-50 Great Jones Street

Great Jones Street between Lafayette and Bowery



Ground Floor Retail and Lower Level:

Space: 4,000 SF ground floor plus 2,000 SF lower level

Term: Ten (10) years

Possession: Upon execution

Rent: Upon Request

Use: Dry Use only

Frontage: 40 feet

Ceiling Height: 14 feet

Other: Built-out space, high ceilings, good column spacing, great frontage, perfect for any dry retail. Currently used as gallery

Neighboring Tenants: Bowery Hotel, Billy Reid, Rogan, John Varvatos, Blue & Cream, Aroma, Bowery Bar, Great Jones Café, Rosada Fine Arts, Starbucks, Ghost, Eva Scrivo Salon

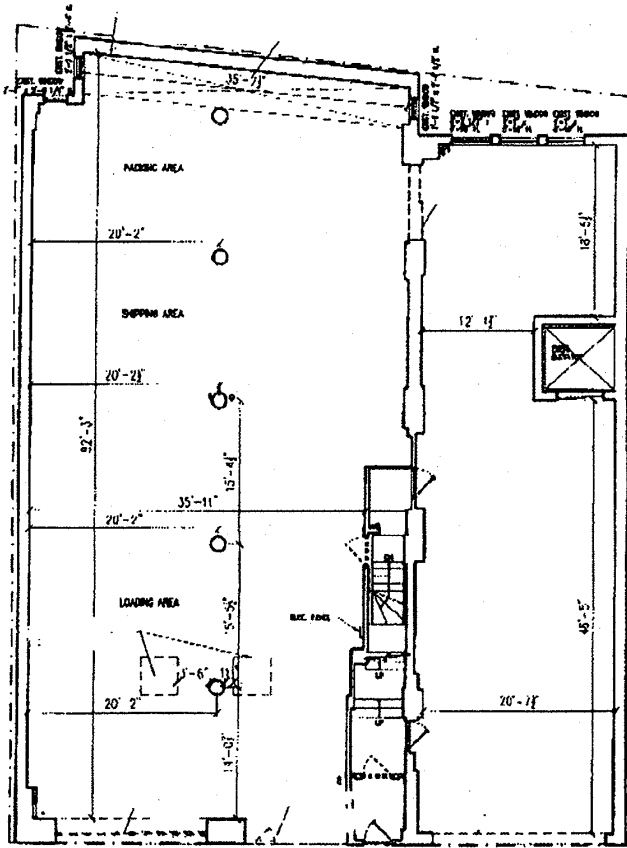
Alan Shmaruk

The Manhattes Group LLC 54 Thompson Street 2nd Floor New York, NY 10012

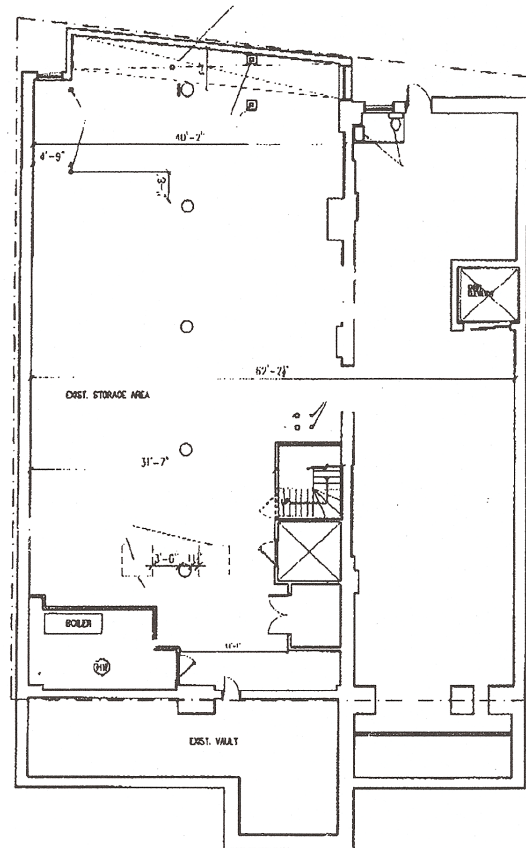
212-334-4666 x11

www.Manhattes.com

48-50 Great Jones Street Floor Plans



Ground Floor



Lower Level