

Hudson Yards

Retail Space Available

10,000 SF & 96' Frontage

**New mixed use high rise midtown Manhattan.
Glenwood Management Development with 550
luxury apartments above**



Uses Considered

- Dry Retail
- White table cloth restaurant
- Child/day care

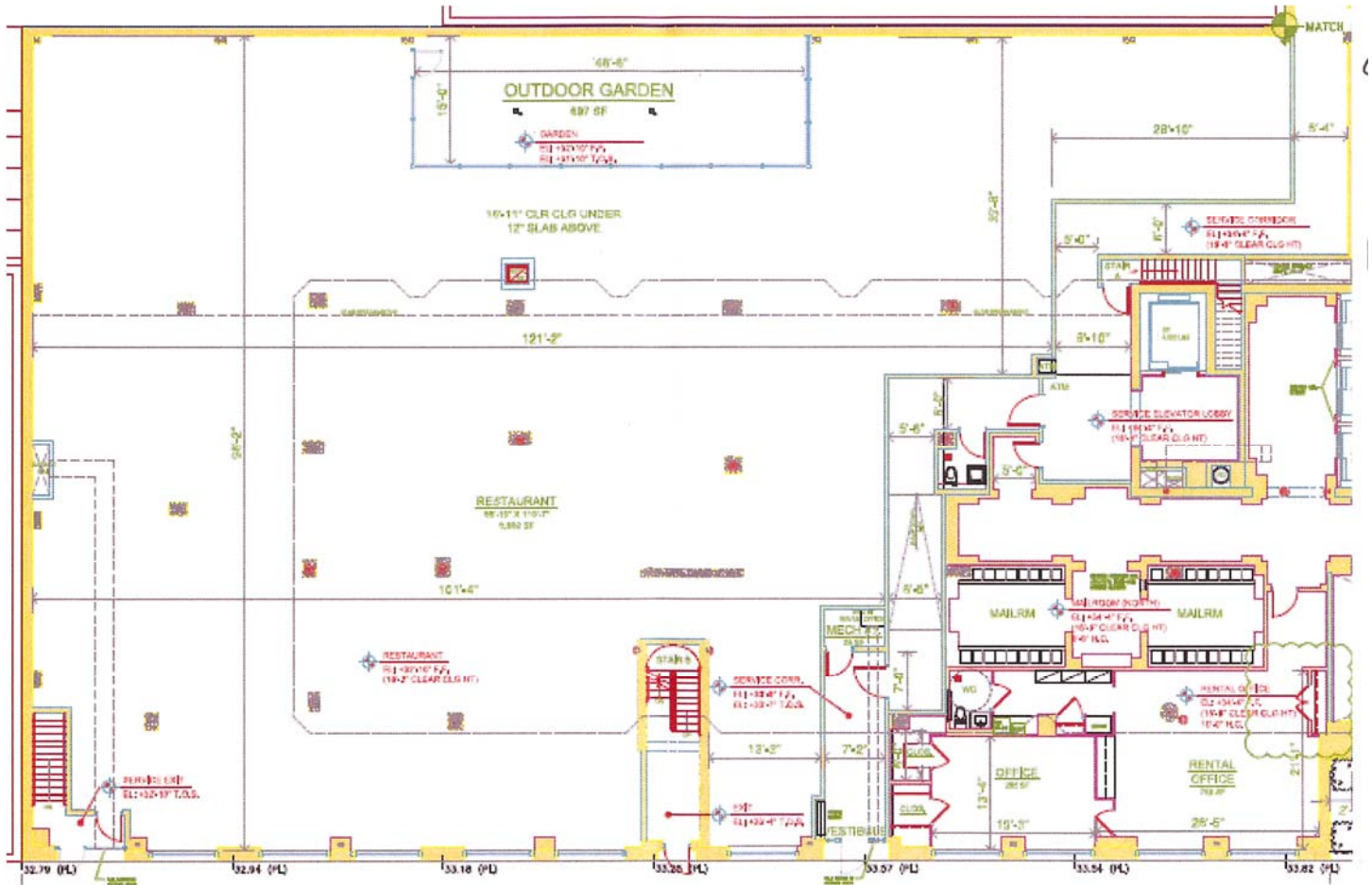
Dave Kevelson x 27

The Manhattes Group LLC 54 Thompson Street 2nd Floor New York, NY 10012

212-334-4666

WWW.Manhattes.com

Floor Plan



Available Space

Space: 10,000 Square Feet along 38th Street

Rent: \$75 Per Square Foot

Ceiling Height: 17'

Frontage: 96' (38th Street)

Availability: Summer 2009

Dave Kevelson x 27

The Manhattes Group LLC 54 Thompson Street 2nd Floor New York, NY 10012

212-334-4666

WWW.Manhattes.com

The New West Side Project by Project



The New West Side Project by Project

- 1) The Atelier
635 West 42nd Street
The Moianin Group
Architect: Costas Kondylis
46 stories, 478 condominiums
Partially occupied, to be completed this summer
- 2) 605 West 42nd Street
The Moianin Group
Architect: Costas Kondylis
60 stories, 1,000 rentals
Under construction, to be completed in 2009
- 3) River Place II
600 West 42nd Street
Silverstein Properties
Architect: Costas Kondylis
57 stories, 1,157 rentals (232 low-income units)
Under construction
- 4) 10th Avenue and 42nd Street
The Related Companies
60 stories mixed-use, 500 rentals (125 low-income), 250-room hotel, theaters
Proposed
- 5) Javits Convention Center Expansion
State and City of New York
Architect: Richard Rogers, FxFowle, A. Epstein
Two-block extension of existing convention center and new façade
Under review by Spitzer administration

- 6) 37th Street and 11th Avenue
Triangle Management Co. (Baruch Singer)
Two 40-plus-story hotels
Proposed
- 7) 505 West 37th Street
Rockrose Development
Architect: Handel Architects
43- and 34-story towers, 824 rentals (166 low-income)
Construction to start in summer, to be completed fall 2009
- 8) 455 West 37th Street
Rockrose Development
Architect: Handel Architects
23 stories, 388 rentals (80 low-income)
Under construction, to be completed spring 2009
- 9) 37th Street between Ninth and 10th avenues
Hudson Mews North and South
The Dermot Company
FxFowle
18 stories, 809 rentals (162 low-income) 30,000 square feet of open space
Proposed

- 10) Hotel Galerie
Asa Properties
Architect: Costas Kondylis
12 stories, 92 serviced condominiums, 87-room hotel
Under construction, to be completed by early 2009
- 11) 37th Street, between Eighth and Ninth
Glenwood Management
24 stories, 550 rentals
- 12) 11th Avenue, between 35th and 36th streets
Javits Center Hotel
Developer to be determined
70 to 90 stories, 1,000 to 1,500 hotel rooms
State-city agency is reviewing five proposals
- 13) 11th Avenue between 34th and 35th streets
The Moianin Group
Potential for two million square feet of commercial space
Under consideration
- 14) 11th Avenue between 33rd and 34th streets
Extell Development
Commercial building site
Under consideration

- 15) 34th Street and 10th Avenue
Sherwood Equities
55-story office building
Under consideration
- 16 & 17) 30th to 33rd streets, 10th to 12th avenues
M.T.A. Railyards
12 million square feet of residential and commercial development rights, six-plus acres of open space
State-owned property, expected to be put out to bid in May
- 18) Ninth Avenue between 31st and 33rd streets
Brookfield Properties
Architect: Skidmore, Owings & Merrill
Four million square feet of office space, 700,000 square feet of residential
In development
- 33rd streets
Moynihan Station/Madison Square Garden
Sports arena, train station, commuter retail in refurbished Farley Post Office
In design, under negotiation
- 20) 316 11th Avenue
Douglaston Development
Architect: Stephen B. Jacobs Group
34 stories, 370 units (80 low-income)
Proposed

Dave Kevelson x 27

The Manhattes Group LLC 54 Thompson Street 2nd Floor New York, NY 10012

212-334-4666

WWW.Manhattes.com