



The Manhattes Group LLC

1999 First Avenue

New York City

## 4,407 Sq Ft Corner Retail space First Avenue in New Building



- High ceilings
- Wrap around glass frontage
- Divisible down to 1,500 square feet
- All uses considered
- Over 1,000 new apartments in a 5 block radius
- Neighboring retail and commercial tenants include Mt. Sinai, Rite Aid, Duane Reade, White Castle and many others

Jamison Weiner x12

The Manhattes Group LLC 1151 Broadway Floor 3 South New York, NY 10001

212-334-4666

jweiner@manhattes.com

[www.Manhattes.com](http://www.Manhattes.com)



The Manhattes Group LLC

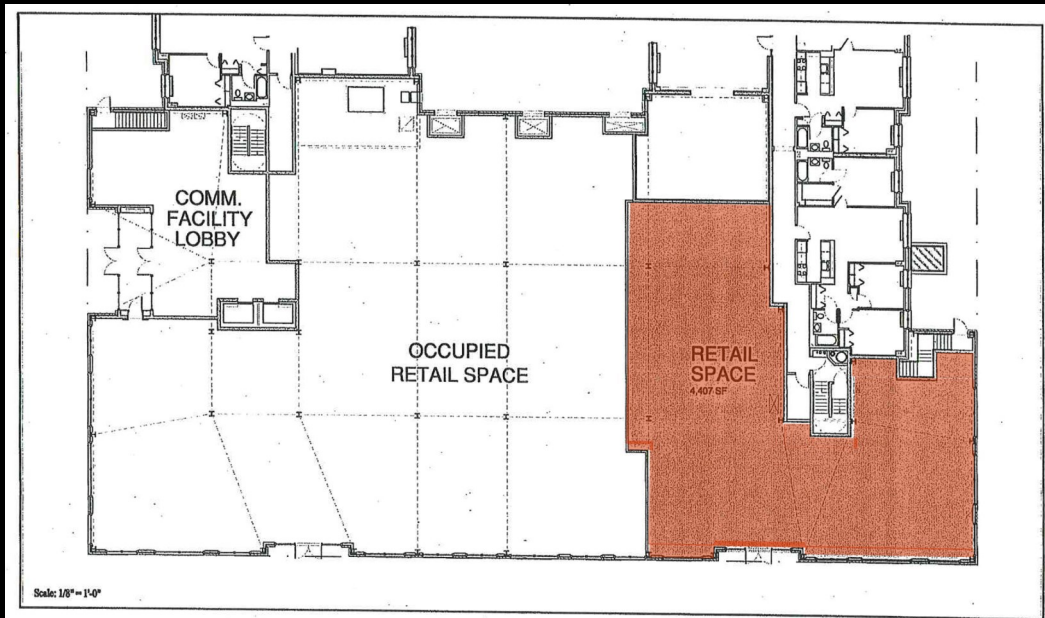
1999 First Avenue

New York City

## Interior image



## Floor Plan



Jamison Weiner x12

The Manhattes Group LLC 1151 Broadway Floor 3 South New York, NY 10001

212-334-4666

jweiner@manhattes.com

[www.Manhattes.com](http://www.Manhattes.com)