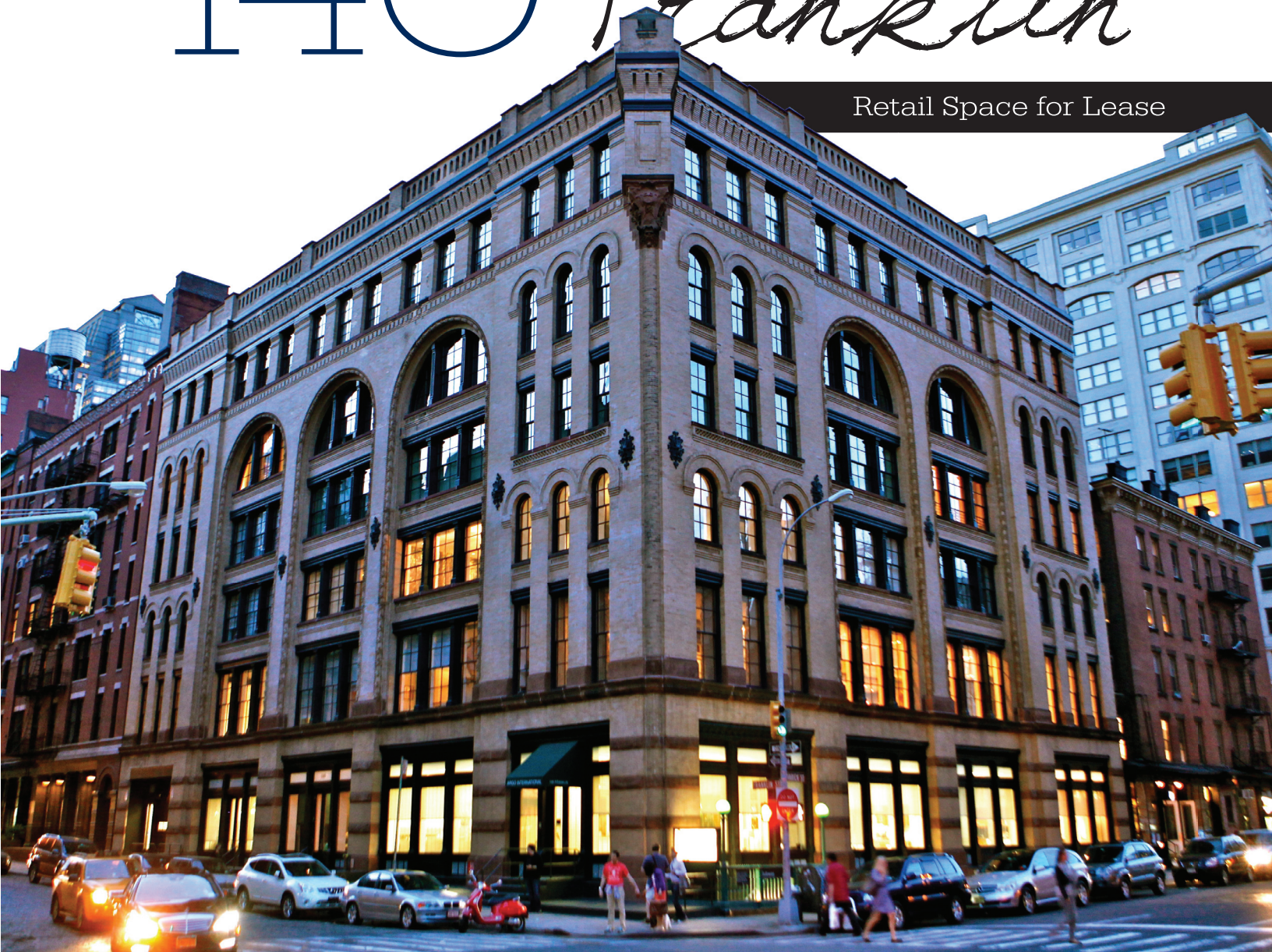


140 Franklin

Retail Space for Lease



To schedule an appointment, please contact Jamison Weiner

The Manhattes Group LLC

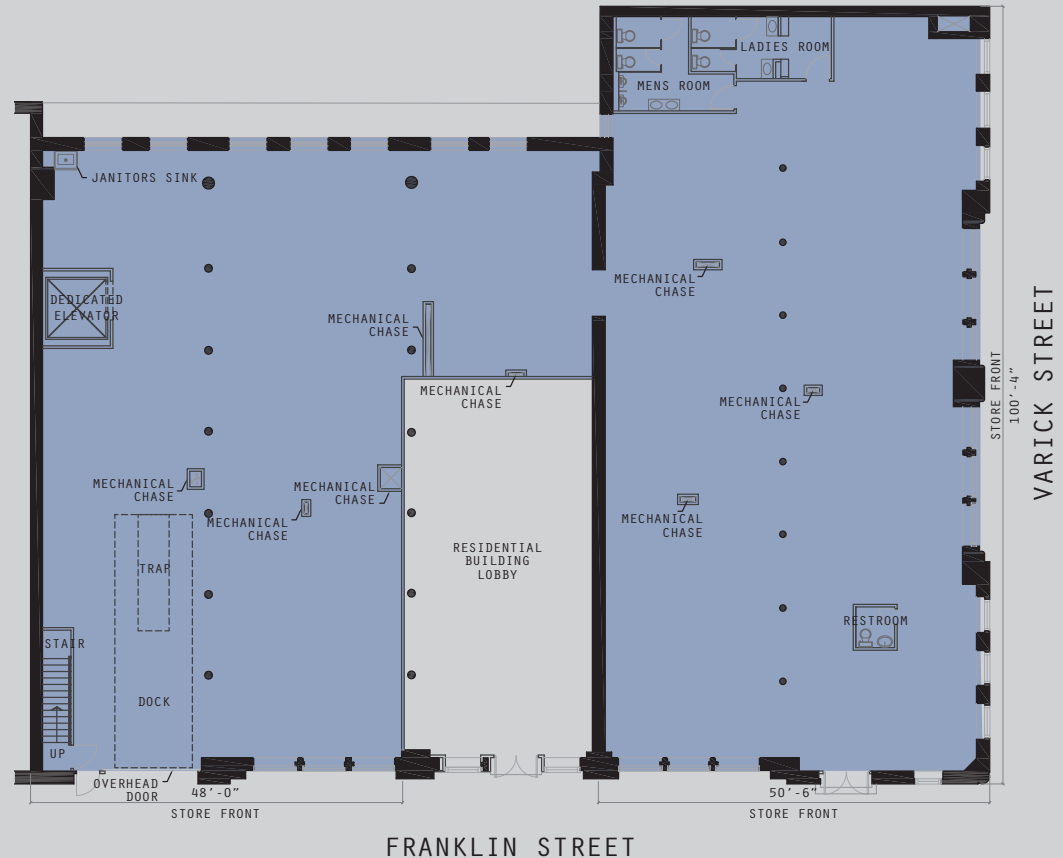
212.334.4666 | JWeiner@manhattes.com | manhattes.com

140 Franklin

> *The Grandest Retail Space of Them All*

- Ground Floor 9,500 sq ft
- Lower level 9,500 sq ft
- Space is divisible
- The Frontage:
100' on Varick (Avenue)
85' on Franklin (Side Street)
- Ceilings are approximately
15' on the ground floor and
12' in the lower level
- Dedicated elevator to the
retail and lower level
- Space currently has a drive
in bay with a curb cut on the
sidewalk
- Access to ventilation stack for
cooking; goes up to the roof
- Space can be used for any
legal use including restaurant,
retail, medical, financial,
office, gallery, showroom,
and event space

Street Level Floor Plan



Price available upon request



140 Franklin

> *The Grandest Retail Space of Them All*

- Ground Floor 9,500 sq ft
- Lower level 9,500 sq ft
- Space is divisible
- The Frontage:
100' on Varick (Avenue)
85' on Franklin (Side Street)
- Ceilings are approximately
15' on the ground floor and
12' in the lower level
- Dedicated elevator to the
retail and lower level
- Space currently has a drive
in bay with a curb cut on the
sidewalk
- Access to ventilation stack for
cooking; goes up to the roof
- Space can be used for any
legal use including restaurant,
retail, medical, financial,
office, gallery, showroom,
and event space

Lower Level Floor Plan



Price available upon request



140 Franklin

> *The Grandest Retail Space of Them All*

Set in Tribeca's finest landmarked building and situated on one of the neighborhood's most visible corners, the retail space in 140 Franklin benefits from its location in many ways. First, this is Tribeca, once known as the West Ward and now home to a plethora of renowned restaurants, shops, hotels and galleries — as well as some of the most expensive residential real estate in Manhattan. Next, this is North Tribeca, segmented as such because of the highly desirable and timeless architecture that defines it. And in North Tribeca on the corner of fabled Franklin and Varick Streets, overlooking picturesque Finn Square Park stands perhaps the most iconic building in Tribeca. 140 Franklin is famous for its grand size and landmarked 19th century architecture — as well as because of the way it is situated with nothing to obstruct the view of it from the southeast. This is the best building on the best corner in the best neighborhood in the best city in the world.

The street level retail at 140 Franklin is a rare and highly sought-after offering. This is a flagship space that is unique because of its location, visibility and size as well as its fully functioning, equal-in-size lower level. Ideal for either a restaurant or an upscale retail store, 140 Franklin can boast the best of all worlds, making it both a destination and a magnet for passersby.

140 Franklin is the grandest retail space of them all.

