



The Manhattes Group LLC

710 Greenwich  
West Village  
New York City

## Retail Space Available for Lease



Existing Conditions



This rendering is an architect's interpretation;  
design is subject to Landmark's approval

## Rental Information Available Upon Request

- 45' feet of frontage
- 5,500 sq ft ground floor
- 2,500 sq ft lower level
- high ceiling height
- 710 is located two blocks to the West of fashionable Bleecker Street
- 710 is located five blocks to the South of The Meat Packing District
- all uses considered

Jamison Weiner x12

The Manhattes Group LLC 1151 Broadway Floor 3 South New York, NY 10001

212-334-4666

jweiner@manhattes.com

[www.Manhattes.com](http://www.Manhattes.com)

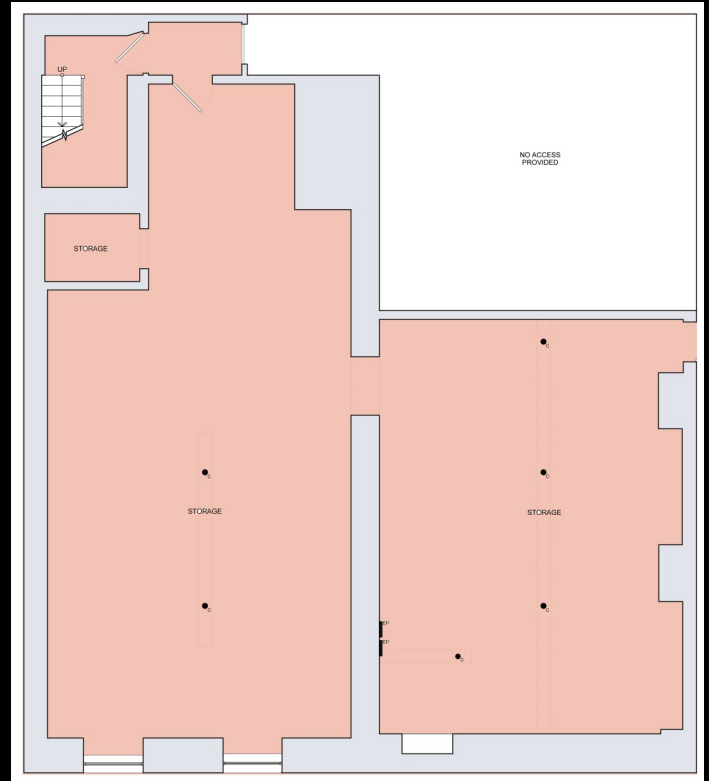
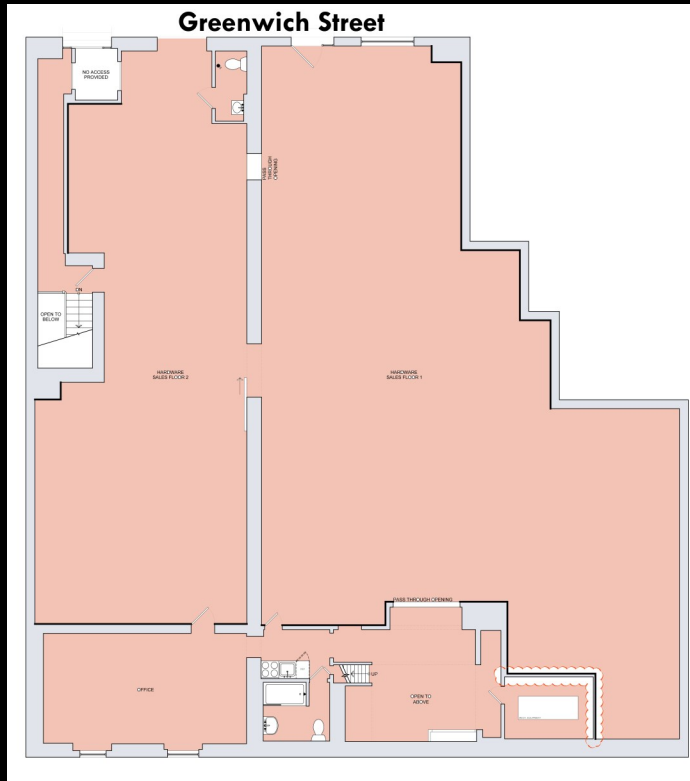


The Manhattes Group LLC

710 Greenwich  
West Village  
New York City

## Ground Floor

## Basement



## Images of West Village Retail



Jamison Weiner x12  
 The Manhattes Group LLC 1151 Broadway Floor 3 South New York, NY 10001  
 212-334-4666  
 jweiner@manhattes.com  
 www.Manhattes.com



The Manhattes Group LLC

710 Greenwich  
West Village  
New York City



## Nearby Retailers

### Retailers in the West Village:

Zadig & Voltaire	7 For All Mankind
Nars Cosmetics	Sisley Paris Boutique
Bond No. 9	Aesop
Annick Goutal	Billy Reid
Hotoveli	Intermix
Brunello Cucinelli	Scotch & Soda
Michael Kors	Maison Margiela
Marc Jacobs	Burberry
Fresh	Reiss
Club Monaco	See Eyewear
Bonpoint	Paul Smith
Tomas Maier	Gant
Sandro	MAC
Christofle	Georg Jensen
Kate Spade	Alexis Bittar
Anine Bing	Sunglass Hut
Jo Malone	

### Retailers in the Meat Packing District:

Apple	Tory Burch
Hugo Boss	Anthropologie
UGG	Carlos Miele
Alice & Olivia	Vitra
Diane Von Furstenberg	All Saints Club
Calypso	Arhaus
Sephora	Ted Baker
Theory	Vince
Asics	Helmut Lang
Patagonia	Warby Parker
Levi's	Samsung
Kiehl's	Rag & Bone
L'Occitane En Provence	Joie
Solstice Sunglasses	LuluLemon
Jeffery	

## Images of Urban Zen Store (Donna Karan) 705 Greenwich Street



Jamison Weiner x12

The Manhattes Group LLC 1151 Broadway Floor 3 South New York, NY 10001

212-334-4666

jweiner@manhattes.com

www.Manhattes.com



The Manhattes Group LLC

710 Greenwich  
West Village  
New York City

## Demographics

The approximate residential population in the West Village is 34,000 people based on seven 2010 Census Tracts for Manhattan Community District 2. Some population characteristics include:

- 10% of the population in the West Village is less than 20 years old (27% of population of entire US is less than 20 years old).
- 45% of the population in the West Village is 20–39 years old (versus 27% in entire US).
- Females aged 20–39 make up 25% of the population in the West Village (13% of population in entire US). Females aged 20–29 make up 14% of the population in the West Village versus 7% in the entire US. Females in West Village represent 52% of the population versus 51% in all of the US.
- 80% of the population was born in the US (87% in entire US).
- Average household income by census tract was \$180,000 (compared to \$51,000 average household income by state for entire US).

## Points of Interest

- The **Jefferson Market Branch** of the New York Public Library is at 425 Sixth Avenue, corner of West 10th Street. It was built as a courthouse from 1874 to 1877.
- The **High Line**, now a public park, connects the historic district to Chelsea, Hell's Kitchen, and the Hudson Yards Redevelopment Project.
- The **Hudson River Park**, running from 59th Street to the Battery including most of associated piers, is being transformed into a joint city/state park with non-traditional uses.
- The **St. Luke in the Fields Church** is an Episcopal church founded in 1820 on farmland donated by Trinity Church.
- The **Stonewall Inn** is a gay tavern and recreational bar. It is most famous as the site of the Stonewall riots of 1969, which is widely considered to be the single most important event leading to the gay liberation movement and the modern fight for gay and lesbian rights in the United States.
- The **Village Vanguard** is a jazz club opened on February 22, 1935, by Max Gordon. At first, it featured many forms of music, such as folk music and beat poetry, but it switched to an all-jazz format in 1957.
- The **Westbeth Artists Community** is a nonprofit housing and commercial complex dedicated to providing affordable living and working space for artists and arts organizations.
- The new **Whitney Museum of American Art** is located in the West Village. The Whitney, as it is nicknamed, was founded in 1931 by Gertrude Vanderbilt Whitney, a wealthy and prominent American socialite and art patron. Its permanent collection comprises more than 21,000 works.

Jamison Weiner x12

The Manhattes Group LLC 1151 Broadway Floor 3 South New York, NY 10001

212-334-4666

jweiner@manhattes.com

www.Manhattes.com



The Manhattes Group LLC

# 710 Greenwich West Village New York City

## Subway Map



Jamison Weiner x12

The Manhattes Group LLC 1151 Broadway Floor 3 South New York, NY 10001

212-334-4666

jweiner@manhattes.com

www.Manhattes.com